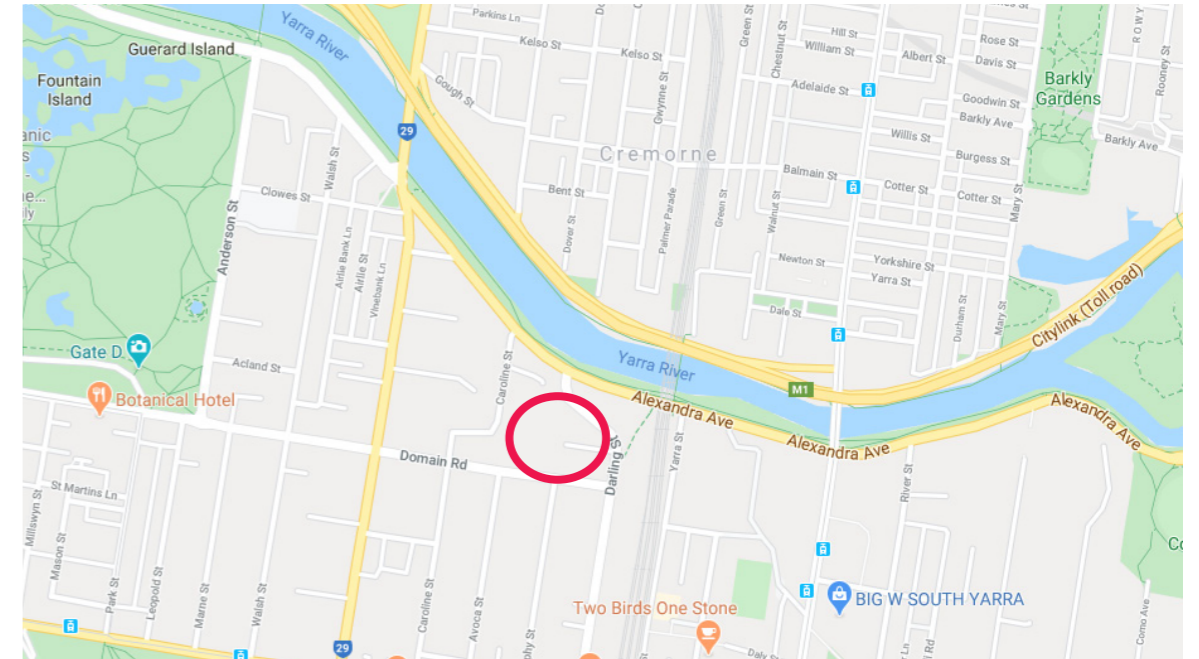


Beverley Hills

Unit 11, 63 Darling Street, South Yarra



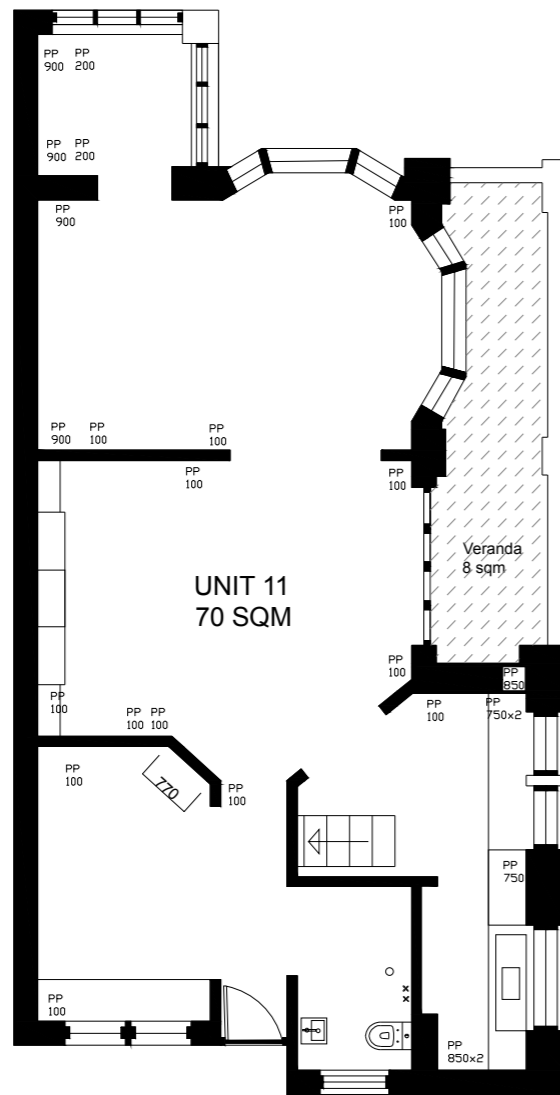
The iconic Beverley Hills complex, designed and built by renowned architect Howard Lawson in 1935, combines Art Deco and Spanish Mission Revival design features. The grounds include extensive gardens, large shared outdoor terraces, a street front entrance pond, and Melbourne's most glamorous Hollywood inspired private pool (with a grotto and bridge)!

The demanding yet charming client sought extensive renovations that would reinstate the dwelling to its original plan as a two bedroom self-contained apartment (units 11 and 15 had previously been joined to create a single large apartment over two stories).

The renovations drew inspiration from the buildings and apartments many beautiful period details and features – including a working black granite fire-place. They sought to sensitively marry the apartment's old-world design elegance and charm, with new luxurious materials such as oak flooring, a hand-crafted glazed wall partition, and an all new, modern bathroom and kitchen.

The renovated apartment has a large North East facing balcony and study room – affording al fresco dining as well as a convenient work-from-home space covering such eventualities as lockdowns.

EXISTING PLAN



NEW PLAN

